



东莞中力仪器科技有限公司

ZhongLi Instrument Technology Co., Ltd.

Introduction

Name: ZL-8001B Computer Servo Type Universal Testing Machine



Equipment summary:

Tel: [+86-769-3365 7986](tel:+86-769-33657986)

Website: www.zltester.com

Fax: [+86-769-3365 7987](tel:+86-769-33657987)

E-mail: Zhongli@zltester.com

Address: [No.62, Xinhe Management of Area, Wanjiang District, Dongguan city, Guangdong province ,China](#)



The machine is designed by mechanical-electrical integration, composition of the force-measuring sensor, transmitter, microprocessor, mechanism of load drive, computer and color inkjet printer. High-precision electronic motor can be set to five-speed, the components are connected by plug-way, Floor-standing models, it is taken account of modern industrial design and ergonomics in modeling and coating

It can be tested all the materials in stretch, compression, bending, shear, embedded relay, peeling, tearing, crack, etc, such as rubber, plastics, leather, metal, nylon wire, fabric, paper, aerospace, packaging, construction, petrochemical, electrical, vehicle, etc.

Single Column Tensile Testing Machine



Double Column Tensile Testing Machine



Standards and standard configuration:

1. GB/T4689.20-1996 measuring fastness of leather's adhesion
2. QB/T2710-2005 measuring leather's expansion and the rate of elongation
3. QB/T2711-2005 measuring tear force of leather
4. QB/T2712-2005 measuring leather's strength and stretch of spherical crack test

Specifications:

Tel: [+86-769-3365 7986](tel:+86-769-33657986)

Website: www.zltester.com

Fax: [+86-769-3365 7987](tel:+86-769-33657987)

E-mail: Zhongli@zltester.com

Address: [No.62, Xinhe Management of Area, Wanjiang District, Dongguan city, Guangdong province, China](#)



1. Computer Servo Type Universal Testing Machine

- A. High-precision sensor 1ton from U.S.A. Accurate Forces within $\pm 0.5\%$.
- B. High-precision 24 bits A / D, sampling frequency 200Hz
- C. Power System: Panasonic AC Servo Motor + Driver + CAVEX + precision ball screw
- D. Control System: it is more precise using Pulse Command control modem, the range in speed control is 0.01 ~ 250 mm / min.the board of iron can be adjust to fast and slow by the control board. it is automatically saved after testing .
- E. Data transmission: RS232 Transfer
- F. Display: windows XP test software.
- G. easy to control five speed and calibration system.
- H. test software can precision control in position, speed, rate of load force and rate of stress, satisfy the different requirements of test.
- I. Test space: Testing width is about 400 mm (standard), moving space of active iron 1000mm (excluding fixtures)
- J. displacement: coder 2500 P / R, increase four-time accuracy. adopt Japanese Lejing coder that has strong anti-jamming capability, displacement resolution 0.001mm.
Small deformation: Metal extensometers, parsing 0.001mm.
- K. Safe equipment : the system would shut down if overload or over-trip

2. Software description about Computer Servo Type Universal Testing Machine

- A. function of standard modular: provide users with the necessary applications to the test, covering GB, ASTM, DIN, JIS, BS ... and other test standard specification.
- B. being test product information: provide users with the data to set about the product, one time to input and re-use permanently . for improving the accuracy, the data can be corrected by the formula automatically.
- C. Dual-Report Editor: provide user with the reported format that user choose (testing program add EXCEL reported format, Extend the previous single pattern of statements)
- D. length unit, force unit and showing the data can exchange, force unit T, Kg, N, KN, g, lb, unit of length mm, cm, inch.
- E. auto-optimization of graphic scale, display the best measurement of graphics. It can test the exchange in graphics. It has the load - displacement, load - time, displacement - time, stress - strain load -2 points extending maps, and lots of graph compared.
- F. Test results can be output in EXCEL format.
- G. the result of test can be automatically preserved or manual preserved, test can automatically calculate the most strength, up and down yield strength, loop method, best method, non-proportional extended strength, tensile strength, compressive strength, tensile strength at any point, constant load extension, elastic modulus, rate of elongation, peel range of maximum, minimum, average, force, total energy, bending modulus, x% load in break displacement, load X% in break displacement, and so on . the test data can be stored in any disk.

Tel: [+86-769-3365 7986](tel:+86-769-33657986)

Fax: [+86-769-3365 7987](tel:+86-769-33657987)

Website: www.zltester.com

E-mail: Zhongli@zltester.com

Address: [No.62, Xinh Management of Area, Wanjiang District, Dongguan city, Guangdong province ,China](#)



H. Software has a capability that can output the before data.

3. The accessories about Computer Servo Type Universal Testing Machine

- A. warranted book within one-year and operating instructions.
- B. a group of fixture
- C. testing software for tensile machine.
- D. a set of brand computer, color printer

4. Items can be tested in the Computer Servo Type Universal Testing Machine

Common items: (display data and calculation)

- tensile stress
- tensile strength
- fixed stress
- stress strength
- the value of force at any point
- pull-out strength
- tensile strength
- rate of elongation at break
- rate of stress at break
- tear strength
- rate of elongation at any point
- force of adhesion and value of peak

5. Main Technical parameters about Computer Servo Type Universal Testing Machine

load cell	20KN
resolution of force	1/200000
accuracy of force	≤0.5%
Power magnification	7 automatic switching
displacement resolution	1/1000
accuracy of displacement	≤0.5%
resolution of extensometer	1/1000
accuracy of extensometer	≤0.5%
Range of speed	0.01—500mm/min or 1000mm/min (according to the needs of customer)
Effective Tensile stroke	800mm;1000mm;1200mm, (can be increased the height according to customer's requirement)
testing width	380mm (can be increased the width)
power supply	220V
power	about 2KW (depending on different demand of force, using different motor)
machine size	about 80x55x220cm(length × width× height)
machine weight	About250 kg
Units	Kg, N, LB, TON, can be exchanged.

Tel: [+86-769-3365 7986](tel:+86-769-33657986)

Fax: [+86-769-3365 7987](tel:+86-769-33657987)

Website: www.zltester.com

E-mail: Zhongli@zltester.com

Address: [No.62, Xinh Management of Area, Wanjiang District, Dongguan city, Guangdong province ,China](#)

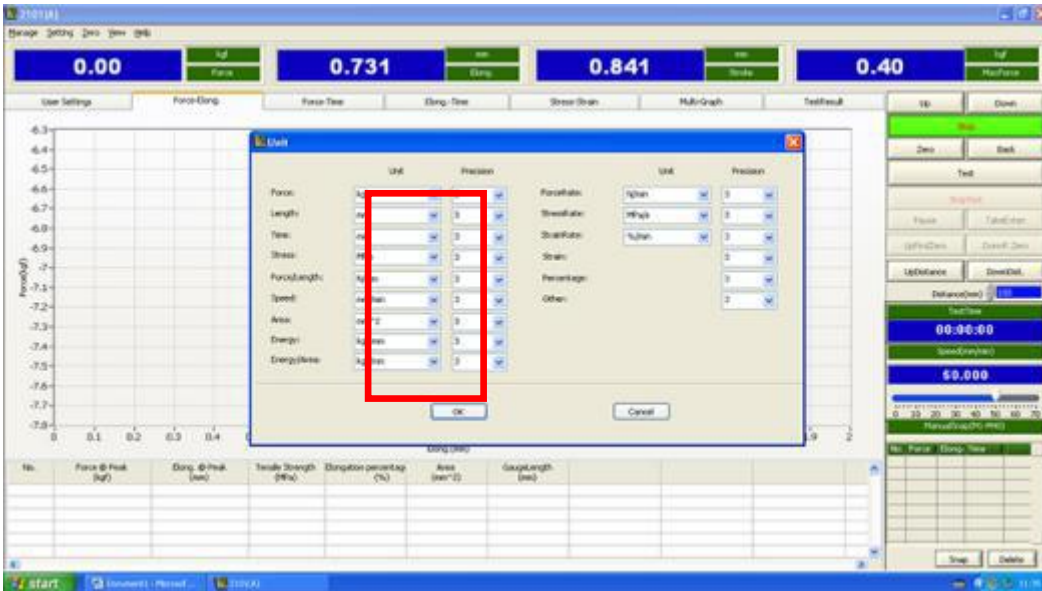


6. Computer servo control material testing machine software operation interface

1. Choose you need units, setting==>unit



2. There are so many units, just choose you need.



3. Connect computer and software online. Setting==>Online==>COM1 or COM2..., after it shows success connected.

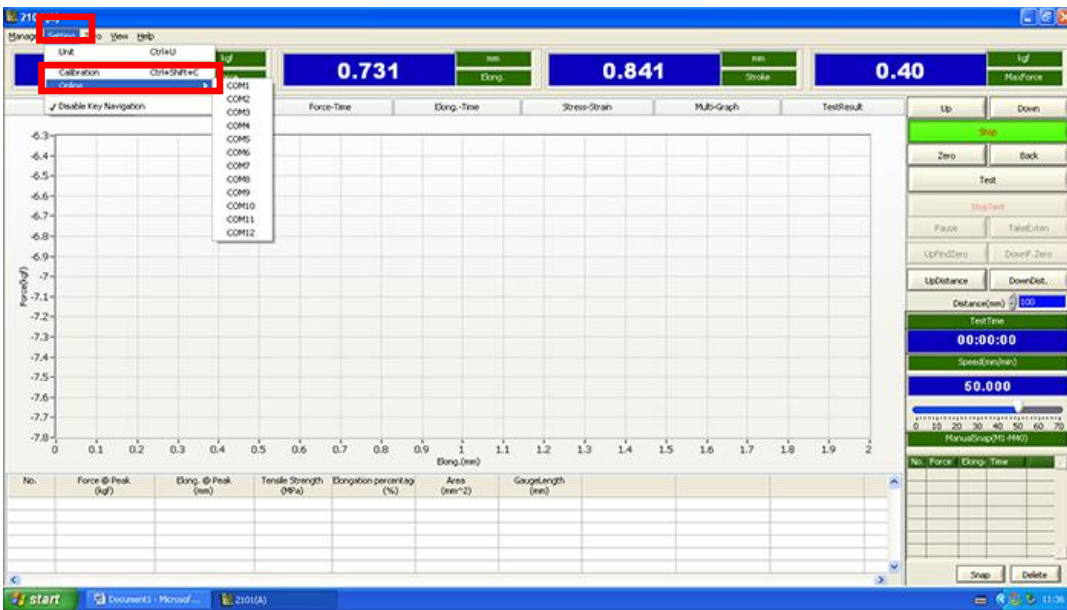
Tel: [+86-769-33657986](tel:+86-769-33657986)

Website: www.zltester.com

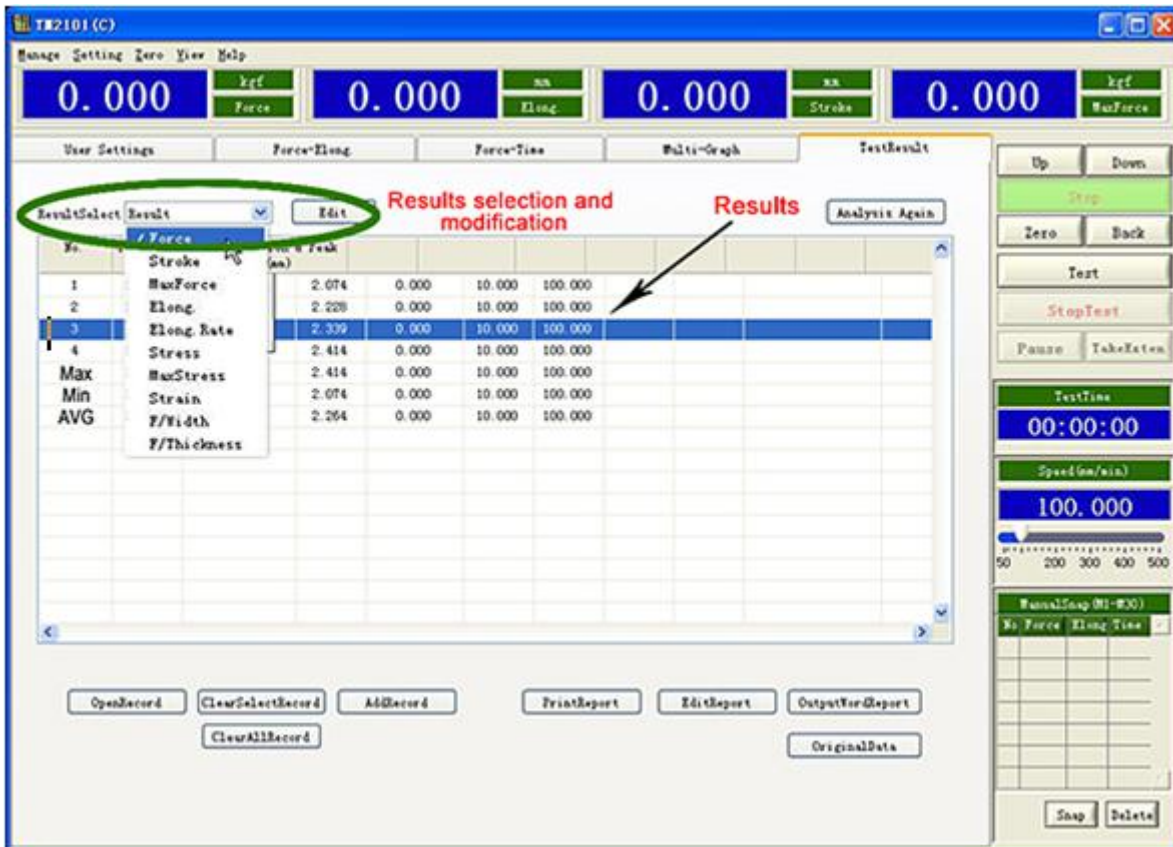
Fax: [+86-769-33657987](tel:+86-769-33657987)

E-mail: Zhongli@zltester.com

Address: No.62, Xinh Management of Area, Wanjiang District, Dongguan city, Guangdong province ,China



5. Test results



6. Computer servo control material testing machine test curve

Tel: [+86-769-3365 7986](tel:+86-769-33657986)

Fax: [+86-769-3365 7987](tel:+86-769-33657987)

Website: www.zltester.com

E-mail: Zhongli@zltester.com

Address: No.62, Xinh Management of Area, Wanjiang District, Dongguan city, Guangdong province ,China



CE certification of tensile testing machine:

Tel: [+86-769-3365 7986](tel:+86-769-33657986)

Website: www.zltester.com

Fax: [+86-769-3365 7987](tel:+86-769-33657987)

E-mail: Zhongli@zltester.com

Address: [No.62, Xinhe Management of Area, Wanjiang District, Dongguan city, Guangdong province ,China](#)



CERTIFICATE

With EU Directive of Machinery Directive (MD 2006/42/EC)
& Low Voltage Directive(LVD 2014/35/EU)

Certificate No.: CE-15-1102-05
Holder: DONGGUAN ZHONGLI INSTRUMENT TECHNOLOGY CO.,LTD.
Room 722, Dongyuan Mansion, No.159 QiFeng Road, Dongguan city,P.R.C
Product: Computer Universal tensile testing machine
Model(s): ZL-8001 / ZL-8002 /ZL-8003 /ZL-8004 / ZL-8005 / ZL-8006ABCD/ZL-8007/ZL-8008/ZL-8009/ZI-8010
Standards: EN ISO 12100:2010,
EN 60204-1:2006+AC:2010

Based upon the voluntary assessment of the product sample and Technical Construction File, the apparatus is deemed to meet the requirements of the above standards and EC directives.

The manufacturer has the responsibility for ensuring that all serial manufacture of the products are in compliance with the specification of the sample submitted for assessment and detailed in the technical file.



Date: 11.02.2015

Certification Body

For and on behalf of
EUROSCENE BUSINESS SOLUTIONS CO., LTD

Euroscene Business Solution

The CE marking may be used if all relevant and effective EC directives are complied with.

Euroscene Business Solution Co., Ltd.

7/11 Minerva Road, Park Royal, London, NW10 6HJ